



Rabbit anti p16INK4a (CT) Polyclonal Antibody

Alternative Name(s): ARF; MLM; P14; P16; P19; CMM2; INK4; MTS1; TP16; CDK4I; CDKN2; INK4A; MTS-1; P14ARF; P19ARF; P16INK4; P16INK4A; P16-INK4A

Order Information

- **Description:** p16INK4a (CT)
- **Catalogue:** 500-6314
- **Lot:** See label
- **Size:** 100ug/200ul
- **Host:** Rabbit
- **Clone:** nan
- **Application:** IHC(P), WB
- **Reactivity:** Hu,

ANTIGEN PREPARATION

A synthetic peptide corresponding to the C-terminus of human p16INK4a protein.

BACKGROUND

The INK4 (inhibitor of cyclin-dependent kinase 4) family consists of four tumor-suppressor proteins: p15(INK4B), p16(INK4A), p18(INK4C), and p19(INK4D). While their sequences and structures are highly homologous, they show appreciable differences in conformational flexibility, stability, and aggregation tendency. p16 (INK4a, CDKN2A, cyclin dependent kinase inhibitor 2A) is a tumor suppressor gene that inhibits cdk4 and cdk6 which phosphorylate the Rb protein. P16INK4a overexpression has been demonstrated in cervical cancers as a result of functional inactivation of pRb. Thus, this antibody can be an important marker for dysplastic squamous and glandular cells of the cervix.

PURIFICATION

The Rabbit IgG is purified by Epitope Affinity Purification

FORMULATION

This affinity purified antibody is supplied in sterile Phosphatebuffered saline (pH7.2) containing antibody stabilizer

SPECIFICITY

This antibody recognizes ~16-18 kDa of human p16INK4a protein. The other species are not tested

STORAGE

The antibodies are stable for 24 months from date of receipt when stored at -20oC to -70oC. The antibodies can be stored at 2oC-8oC for three month without detectable loss of activity. Avoid repeated freezing-thawing cycles.

APPLICATIONS/SUGGESTED WORKING DILUTIONS*

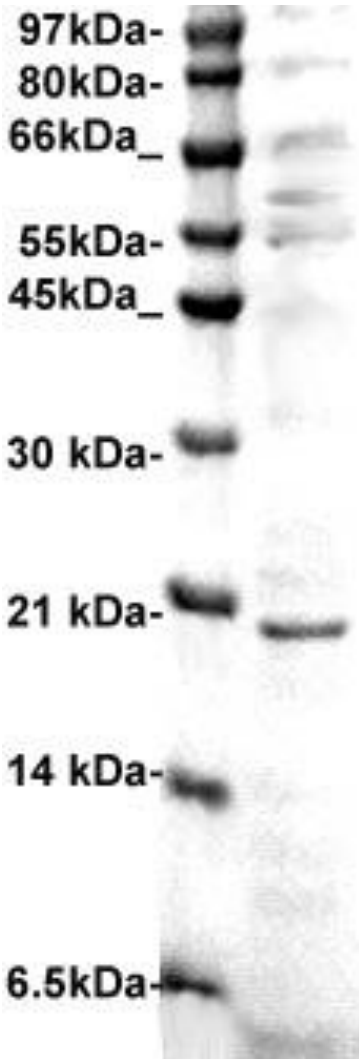
- Western Blot: 0.1-1 µg/ml
- ELISA: 0.01-0.1 µg/ml
- Immunoprecipitation: 2-5 µg/ml
- IHC: 2-10 µg/ml
- Flow cytometry: Not tested
- Molecular Weight: 16.0
- Positive Control: Kidney Tissue
- Cellular Location: Cell Membrane

*Optimal dilutions should be determined by researchers for the specific applications.

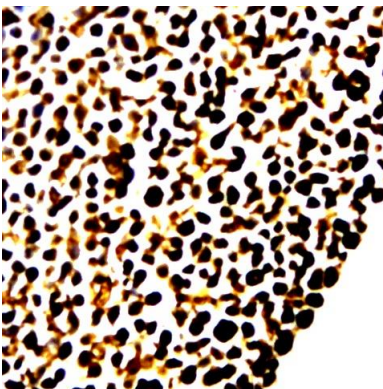
FOR RESEARCH USE ONLY.

AbboMax, Inc 2528 Qume Drive, Suite 8, San Jose, California 95131, USA
1 408-573-1898 (Tel). 1 408-573-1858 (Fax). www.abbomax.com info@abbomax.com

DATA ATTACHMENTS



Western Blot: The cell lysate derived from HT-29 was immunoprobed by Rabbit anti-p16INK4a (Cat#500-6341R) at 1:500. An immunoreactive band is observed around ~18 kDa.



Immunohistochemistry: The whole cell pallet Hela (FFPE) stained with Rabbit anti-p16INK4a (Cat#500-6314) at 1:200 for 10 min @ RT. Staining of formalin-fixed tissue requires boiling tissue sections in 10 mM Citrate Buffer, pH 6.0 for 10 min followed by cooling at RT for 20 min.

REFERENCES

FOR RESEARCH USE ONLY.

AbboMax, Inc 2528 Qume Drive, Suite 8, San Jose, California 95131, USA
1 408-573-1898 (Tel). 1 408-573-1858 (Fax). www.abbomax.com info@abbomax.com